



GMT MONTHLY MEMBERSHIP PROGRESS REPORT

Results as of: 5/31/2026

Multiple District 13

LOCATION: OHIO

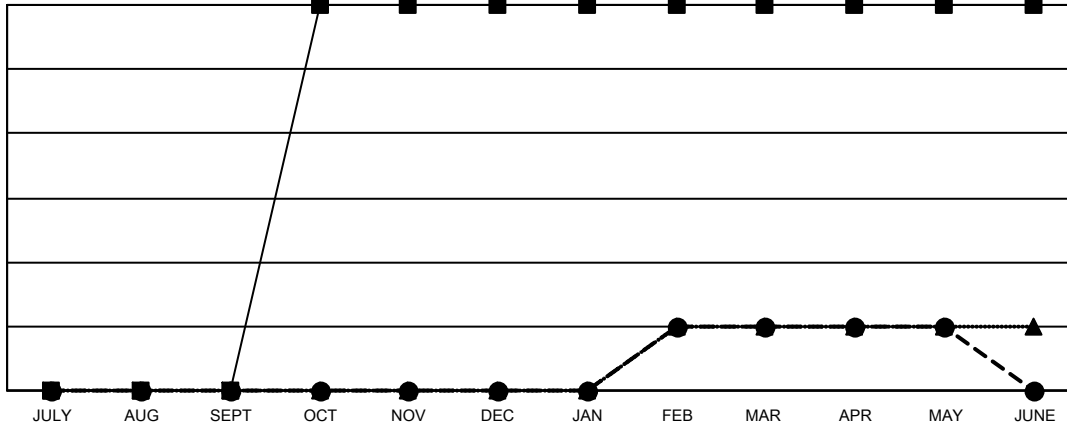
GMT: OPEN

GMT CA 1

Clubs			
RESULTS FOR 2025-2026			
QUARTER	NEW CLUB GOAL	NEW CLUBS	DROPPED CLUBS
JULY/AUG/SEPT	0	0	2
OCT/NOV/DEC	6	0	2
JAN/FEB/MAR	0	1	0
APR/MAY/JUNE	0	0	0

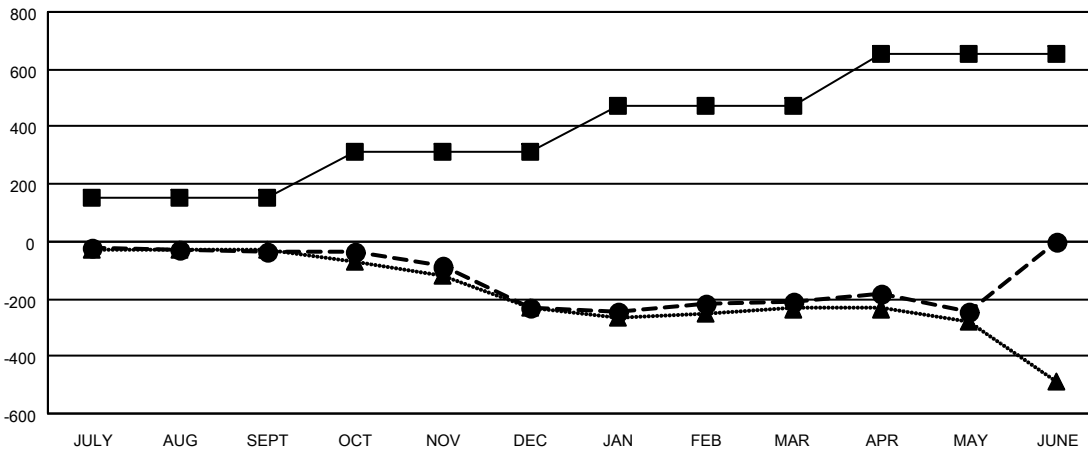
Members			
RESULTS FOR 2025-2026			
QUARTER	MEMBER GROWTH NET GOAL	MEMBER GROWTH ACTUAL	DROPPED MEMBERS ACTUAL (including transfers)
JULY/AUG/SEPT	150	218	216
OCT/NOV/DEC	162	158	344
JAN/FEB/MAR	160	187	147
APR/MAY/JUNE	184	99	127

GOALS AND ACTUAL NEW CLUBS CUMULATIVE



- - CURRENT YEAR GOALS FOR NEW CLUBS
- - CURRENT YEAR ACTUAL NEW CLUBS
- ▲ - LAST YEAR ACTUAL NEW CLUBS

GOALS AND ACTUAL MEMBERS CUMULATIVE



- - MEMBER GROWTH NET GOAL
- - MEMBER GROWTH ACTUAL
- ▲ - LAST YEAR MEMBERSHIP ACTUAL

DROPPED CLUBS: 4	191 CLUBS OF 344 ADDED 1 OR MORE NEW MEMBERS	GENDER DISTRIBUTION
		MALE 6,033 (66.94%)
		FEMALE 2,980 (33.06%)
DROPPED MEMBERS	CLICK HERE FOR CUMULATIVE MEMBERSHIP DATA	TOTAL FAMILY UNIT MEMBERS 1,950
DECEASED 144		FAMILY MEMBERS PAYING HALF DUES 993
CLUB CANCELLED 13		
OTHER 677		
TOTAL 834		